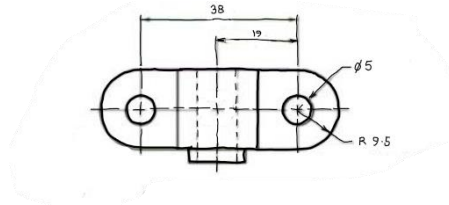
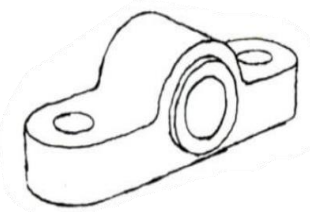




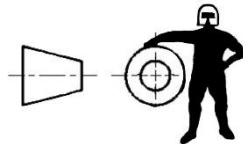
Engineering Graphics Overview

Freehand Technical Graphics

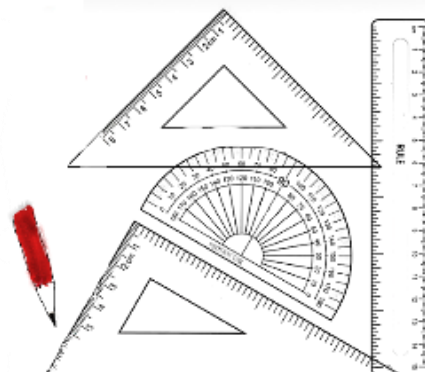
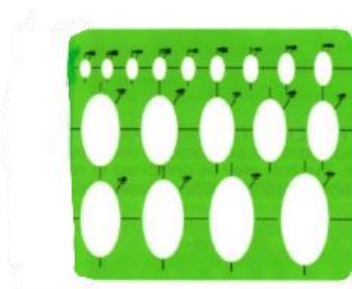
Q1 What is freehand technical graphics and 'sketching'?



Q2 How accurate are freehand sketches?



Q3 Can instruments be used when making 'freehand' technical sketching?





Engineering Graphics Overview

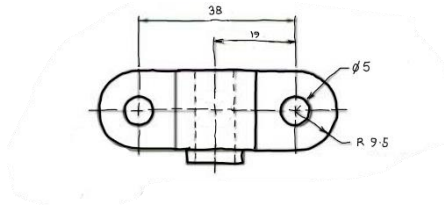
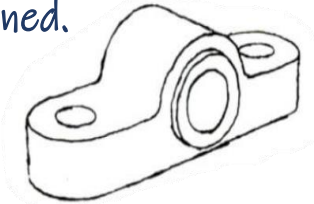
Freehand Technical Graphics

Q1 What is freehand technical graphics and 'sketching'?

Freehand drawing can be considered to include any sketch that is created by a human using a drawing implement. That can include freehand drawing on a digital device. The sketch can be in pencil, pen, or digital.

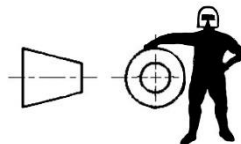
For engineering, the freehand sketch is a critical skill often used at a work site. The engineer records data such as distances and layout. Design solutions are developed.

Hand held supports can be used such as a rule or try square. A significant consideration is that scale and proportion are maintained.

**Q2** How accurate are freehand sketches?

The requirements of an engineering sketch can vary, but a scale should be maintained to represent proportions.

Fundamental AS1100 drawing standards should be applied to ensure clear communication.

**Q3** Can instruments be used when making 'freehand' technical sketching?

Yes. Basic hand-held instruments that aid in maintaining scale and proportion are often used on the work site.

